

BM14A



- Stainless steel IP68 compression load cell
- Hermetically sealed
- Suitable for vehicle and hopper scales and vehicle testing facilities
- Built in surge arrestors
- Current calibrated (sc-option)



OIML test certificate no. D09-07.01

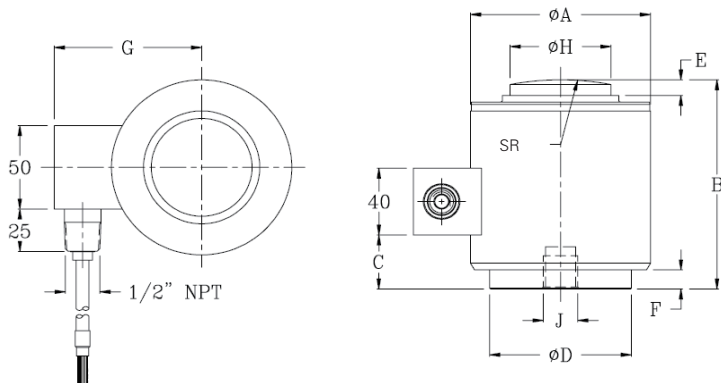
Available models

Capacity	Accuracy	Full article description
10 t	C3	BM14A-C3-10t-10B
25 t	C3	BM14A-C3-25t-20B
40 t	C3	BM14A-C3-40t-20B
60 t	C3	BM14A-C3-60t-20B
100 t	C3	BM14A-C3-100t-20B
200 t	G1 Excluded from OIML	BM14A-G1-200t-20B

Specification

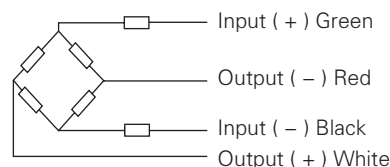
Accuracy class		OIML R60 C3		G1
Output sensitivity (= FS)	mV/V	2.0 ± 0.002		
Maximum capacity (E _{max})	t	10, 25, 40	60, 100	200
Maximum number of load cell intervals (nLC)		3000		
Ratio of minimum LC verification interval Y = E _{max} / V _{min}		9000	10000	
Combined error	%FS	± 0.023		± 0.100
Minimum dead load	t	0		
Safe overload	of E _{max}	150 %		
Ultimate overload	of E _{max}	300 %		
Zero balance	%FS	± 1.0		
Excitation, recommended voltage	V	5 ~ 12(DC)		
Excitation maximum	V	18(DC)		
Input resistance	Ω	450 ± 5		
Output resistance	Ω	480 ± 5		
Insulation resistance	MΩ	≥ 5000 (50VDC)		
Compensated temperature	°C	-10 ~ +40		
Operating temperature	°C	-35 ~ +65		
Storage temperature	°C	-40 ~ +70		
Element material		Stainless steel		
Ingress protection (according to EN 60529)		IP68		
ATEX classification (optional)		II1G Ex ia IIC T4	II1D Ex iaD 20 T73°C	II3G Ex nL IIC T4

Dimensions in mm



Capacity	ΦA	B	C	ΦD	E	F	G	ΦH	J	SR
10t,25t	73 (2.87)	82.5 (3.25)	12 (0.47)	58 (2.28)	7 (0.28)	1.8 (0.07)	64 (2.52)	31.8 (1.25)	M12	152 (5.98)
40t,60t	105 (4.13)	127 (5.0)	34 (1.34)	82.5 (3.25)	9 (0.35)	11 (0.43)	87 (3.43)	58.7 (2.31)	M20	152 (5.98)
100t	152.4 (6.0)	184 (7.24)	72 (2.83)	123.8 (4.87)	23 (0.91)	21 (0.83)	108 (4.25)	79.4 (3.13)	M20	432 (17.01)
200t	167.6 (6.60)	228.6 (9.0)	92 (3.62)	136.3 (5.37)	10 (0.39)	25 (0.98)	123 (4.84)	93.7 (3.69)	M20	432 (17.01)

Wiring



- Shielded, 4 conductor cable.
- Cable diameter: Φ 7.7mm.
- Standard cable length for 10t: 10m and for all other capacities: 20m.
- Shield not connected to element